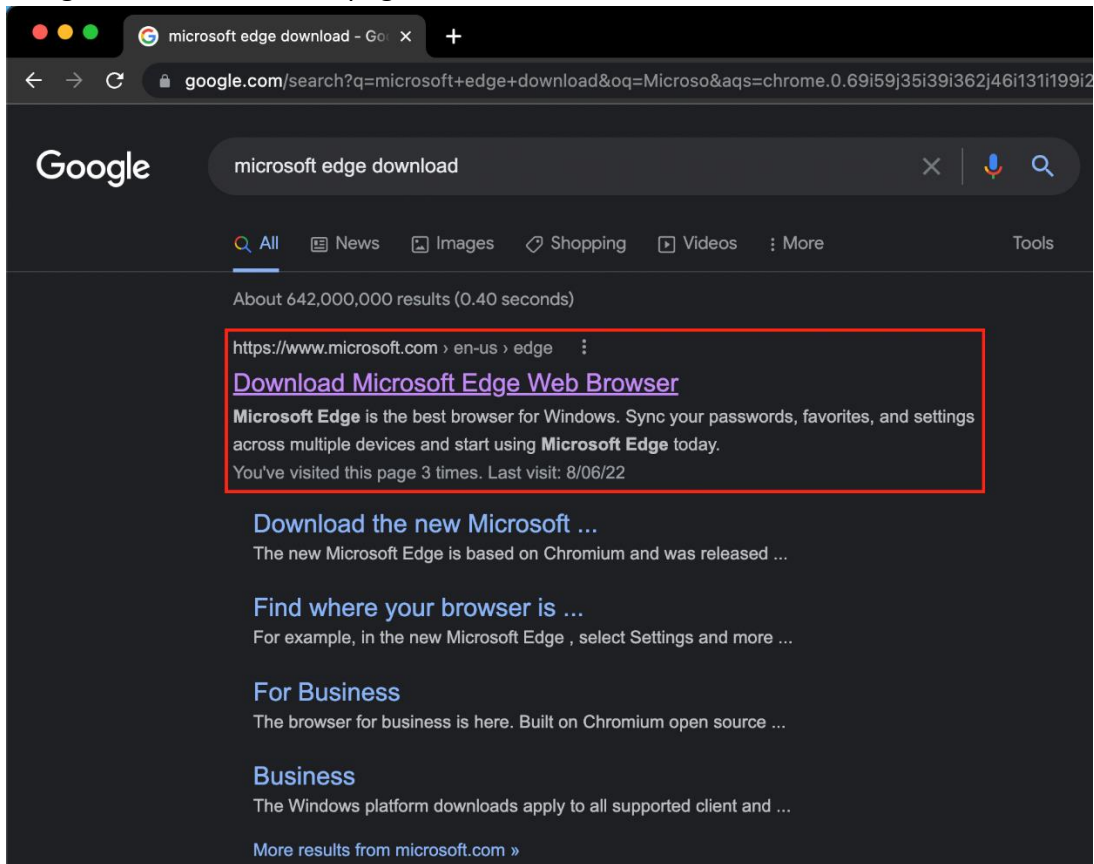


Installing IRIS@Curtin on Microsoft Edge using a MAC Computer

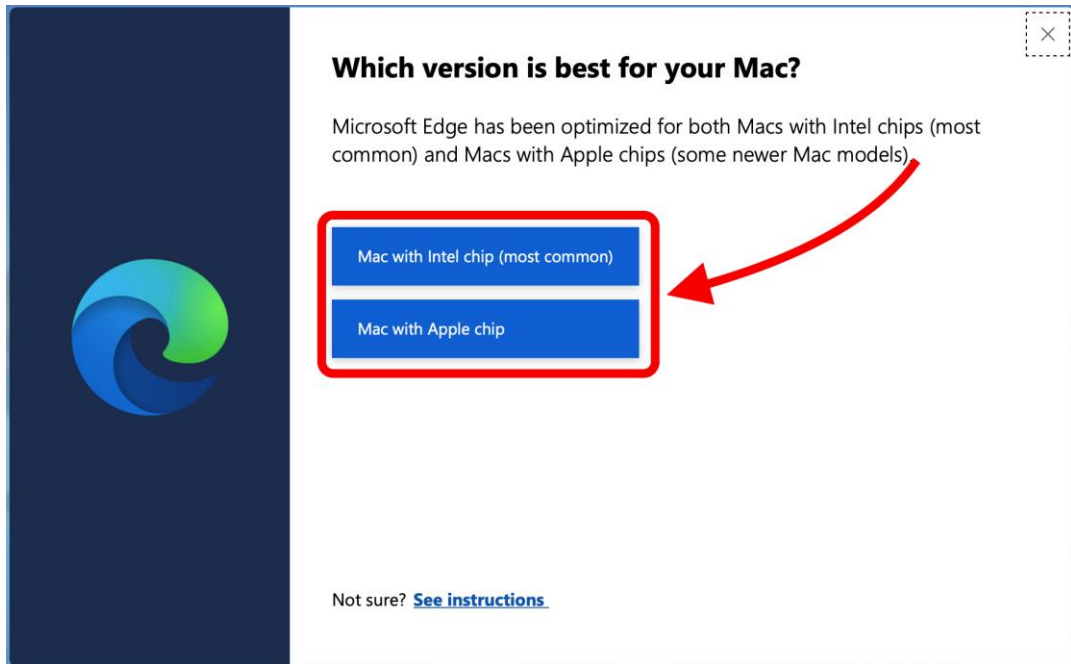
1. On Safari or Google Chrome, google search “Microsoft Edge Download” and navigate to this Microsoft page.



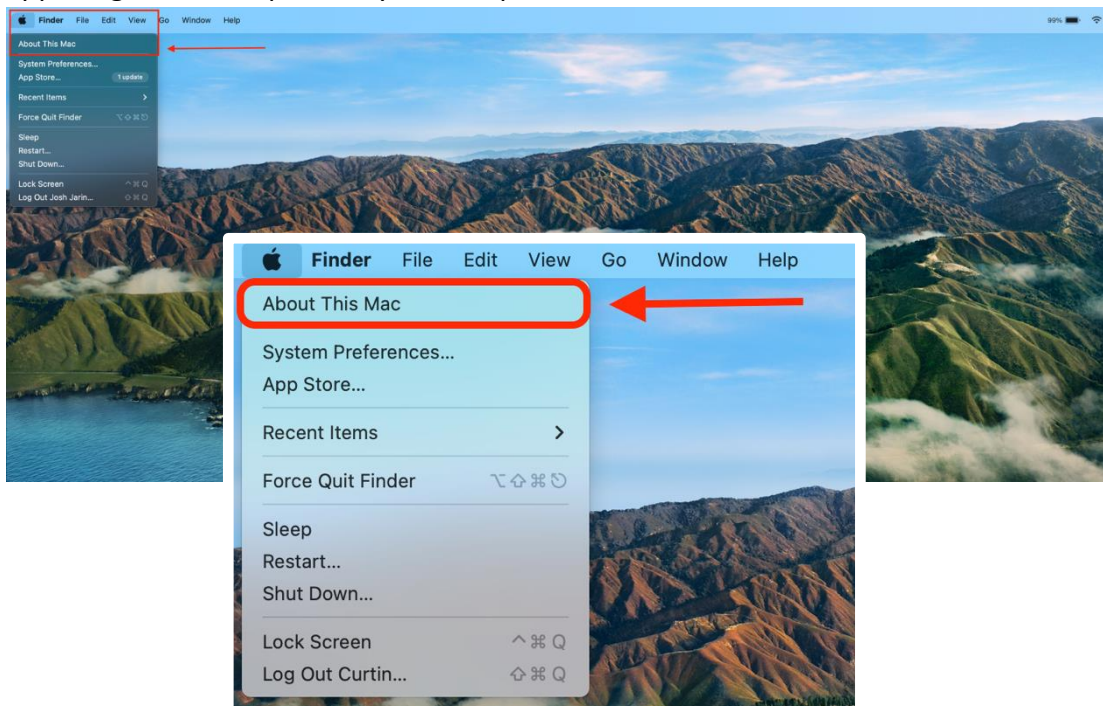
2. Once you are on the download page, click on the Blue “Download for macOS” Button.



3. You will then be prompted with two download options. If your Mac has an Intel Processor click on the “Mac with Intel Chip” option. If your Mac has an Apple Chip, then click on the “Mac with Apple Chip” option.



4. If you are unsure of what processor (“Chip”) your computer has, you can click on the apple logo on the top left of your computer screen and click “About this Mac”.

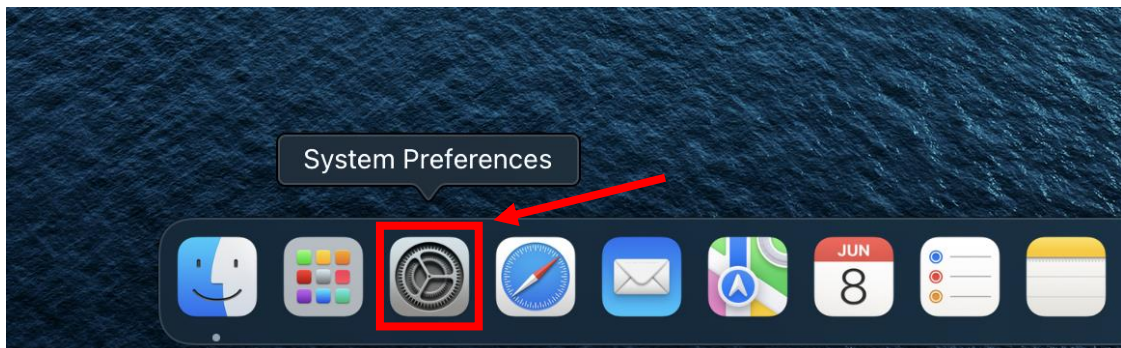


5. The processor name will be next to “Chip”.

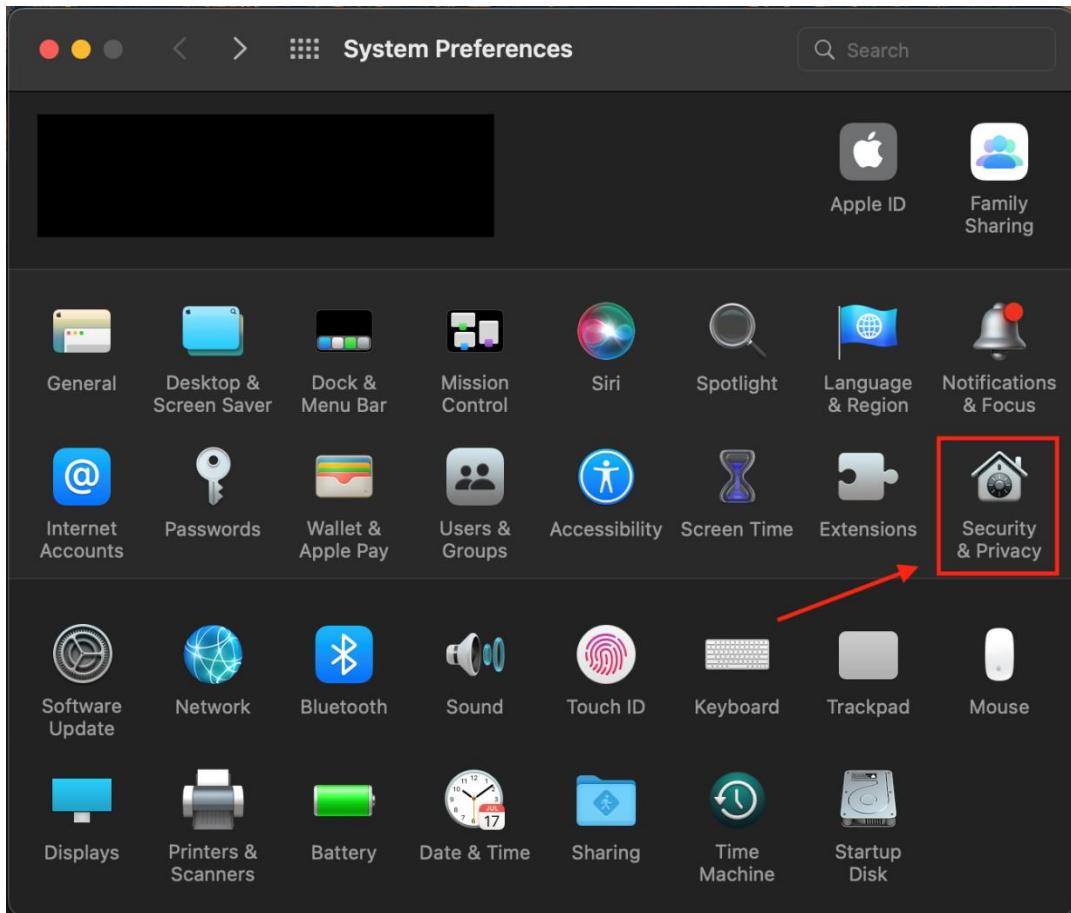


6. Once the Microsoft Edge installation file has been downloaded, follow these [steps](#) on how to install the application. The installer file will be in the “Downloads” folder.

7. Once Microsoft Edge has been installed, open “System Preferences” from the Mac dock.

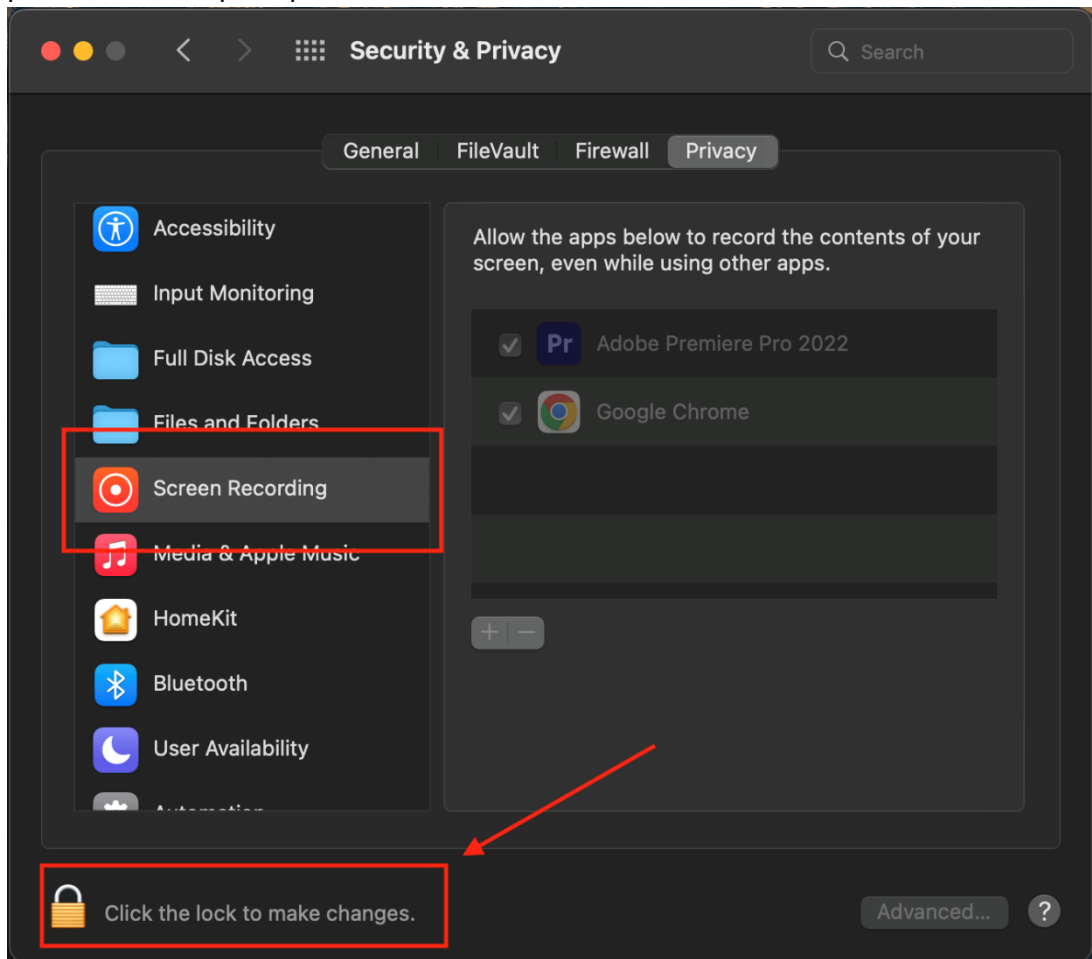


8. Once System Preferences has been opened, click on "Security & Privacy".



9. Once in Security & Privacy, scroll down on the left-hand side, until you find “Screen Recording” and click on this setting.

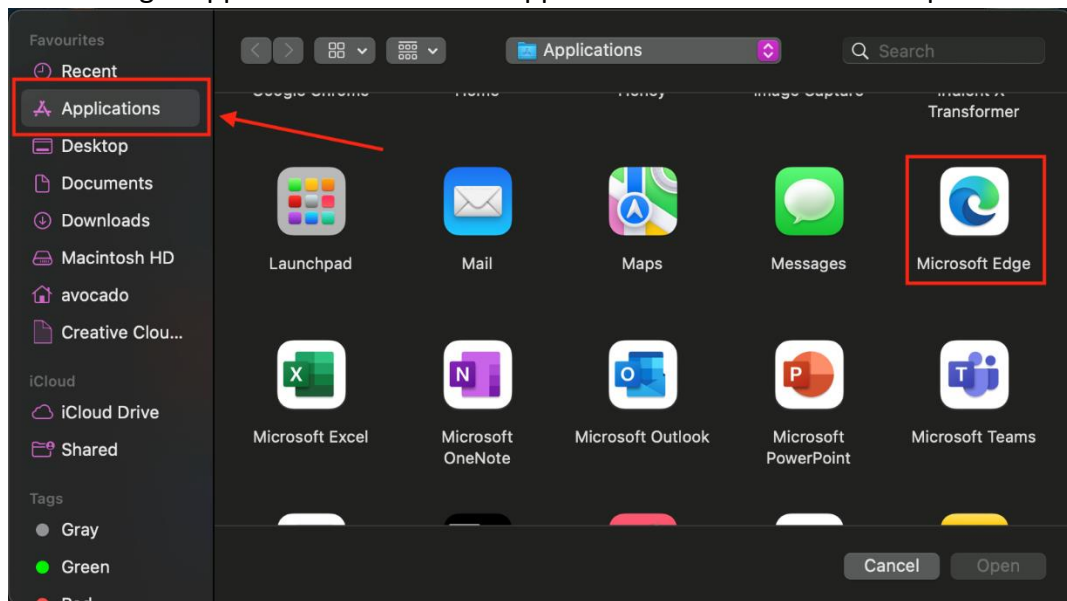
i. Then click on the gold lock on the bottom left of the window and input your password when prompted.



ii. Then click on the “+” button.

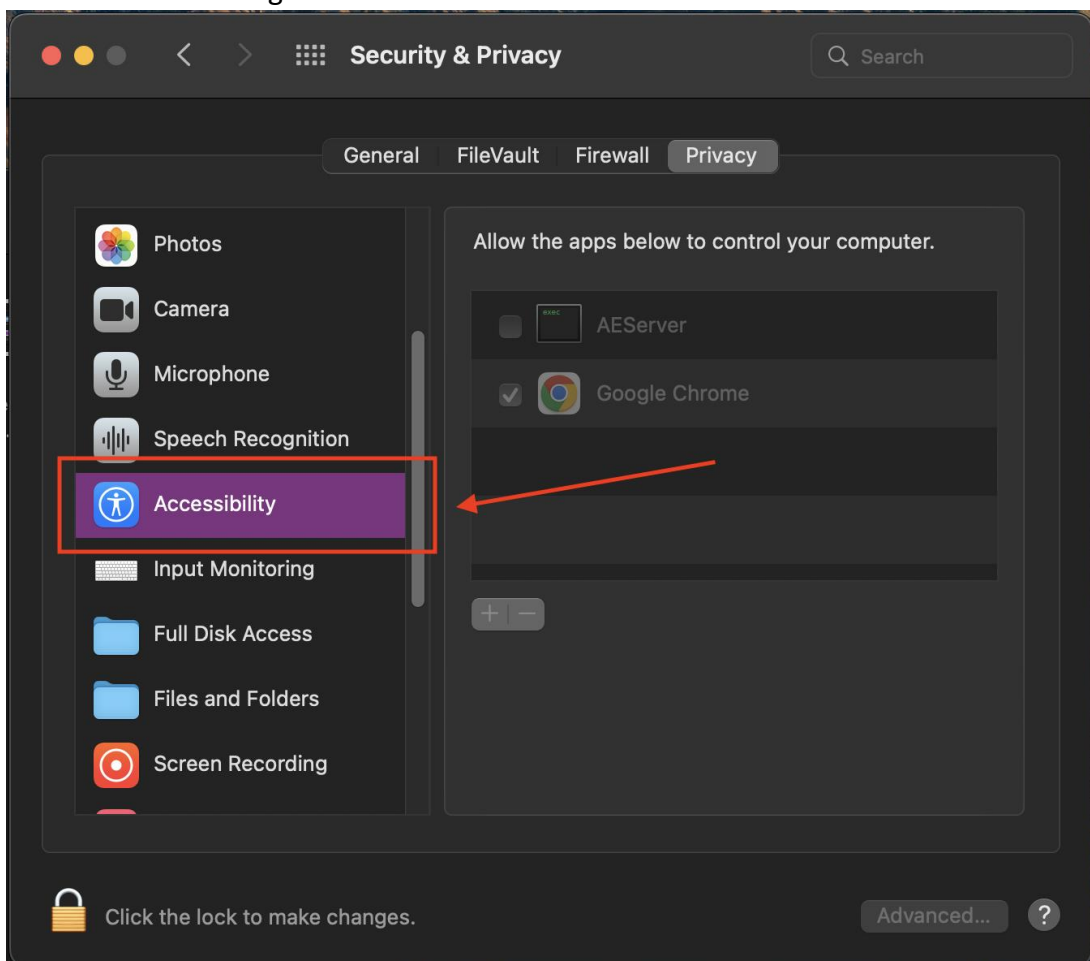


10. Navigate to the “Applications” folder on the left side of the window and find the “Microsoft Edge” application. Click on the application Icon and then click open.

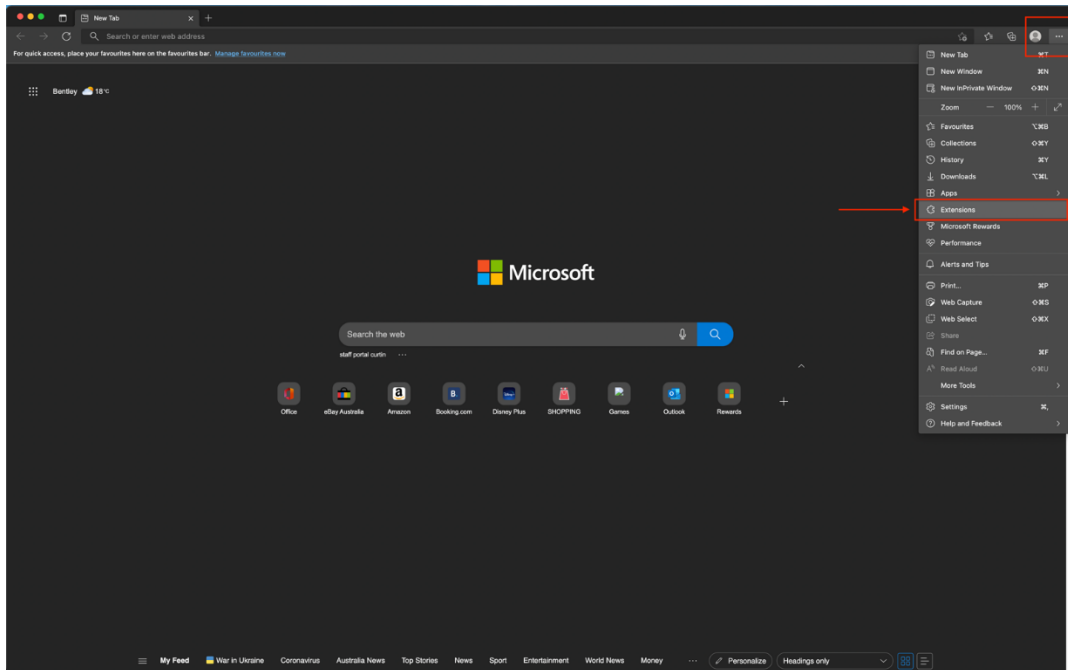


11. Repeat steps 9 – 10, but instead of finding the “Screen Recording”, you will be looking for “Accessibility”.

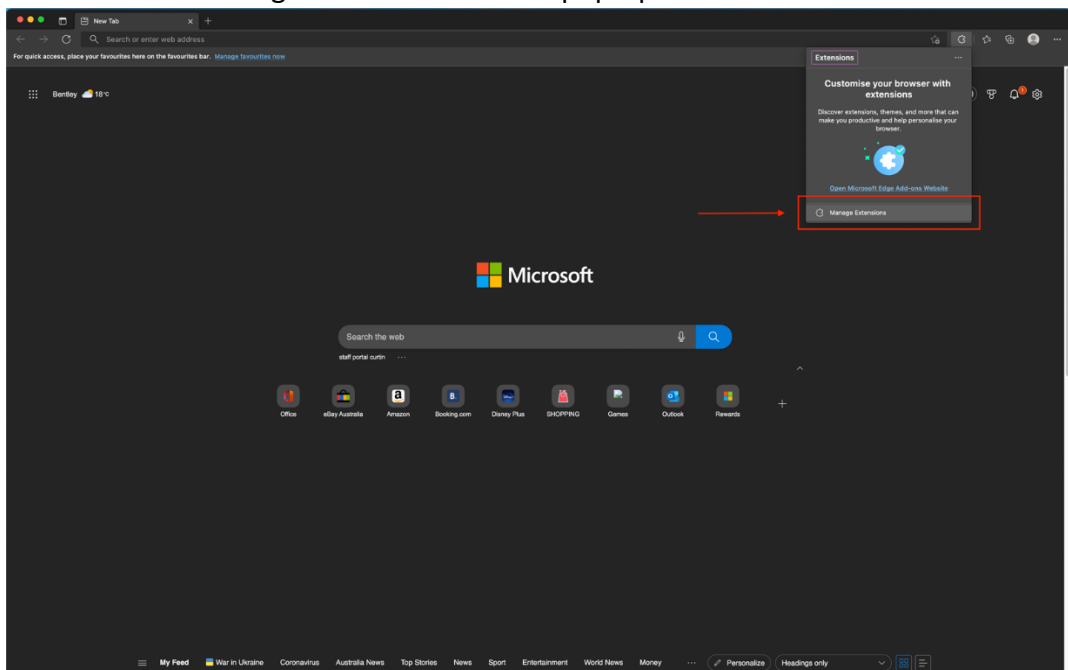
- Once you have added Microsoft Edge to the “Accessibility” option, open the Microsoft Edge Browser.



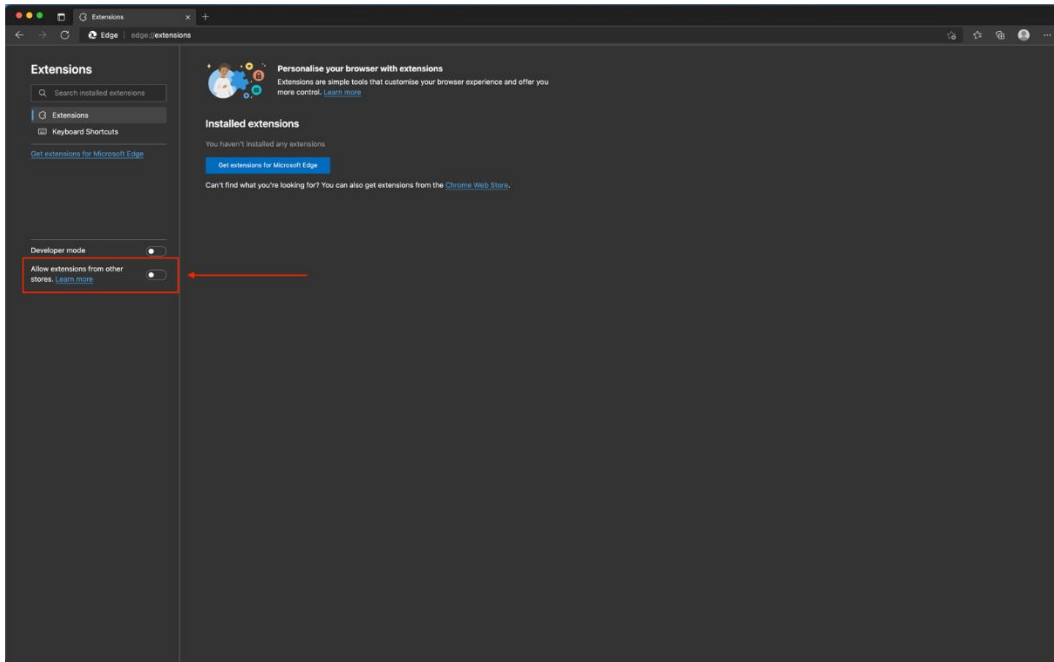
12. From the Microsoft Edge home page, click on the three dots on the top right of the window and click on “Extensions”.



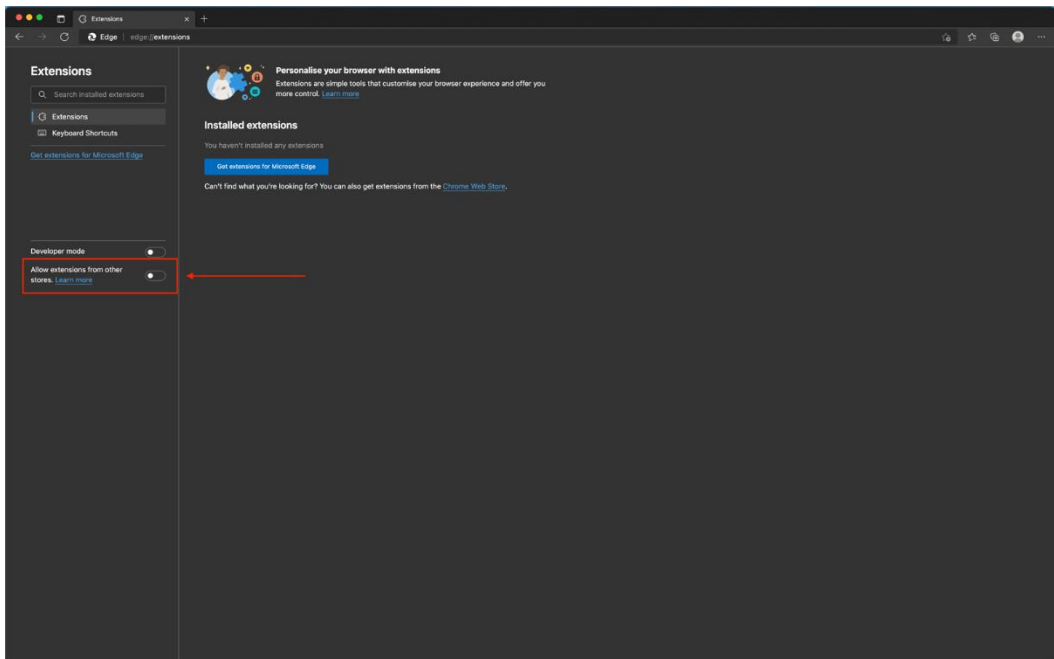
13. Then click on “Manage Extensions” on the pop-up window.



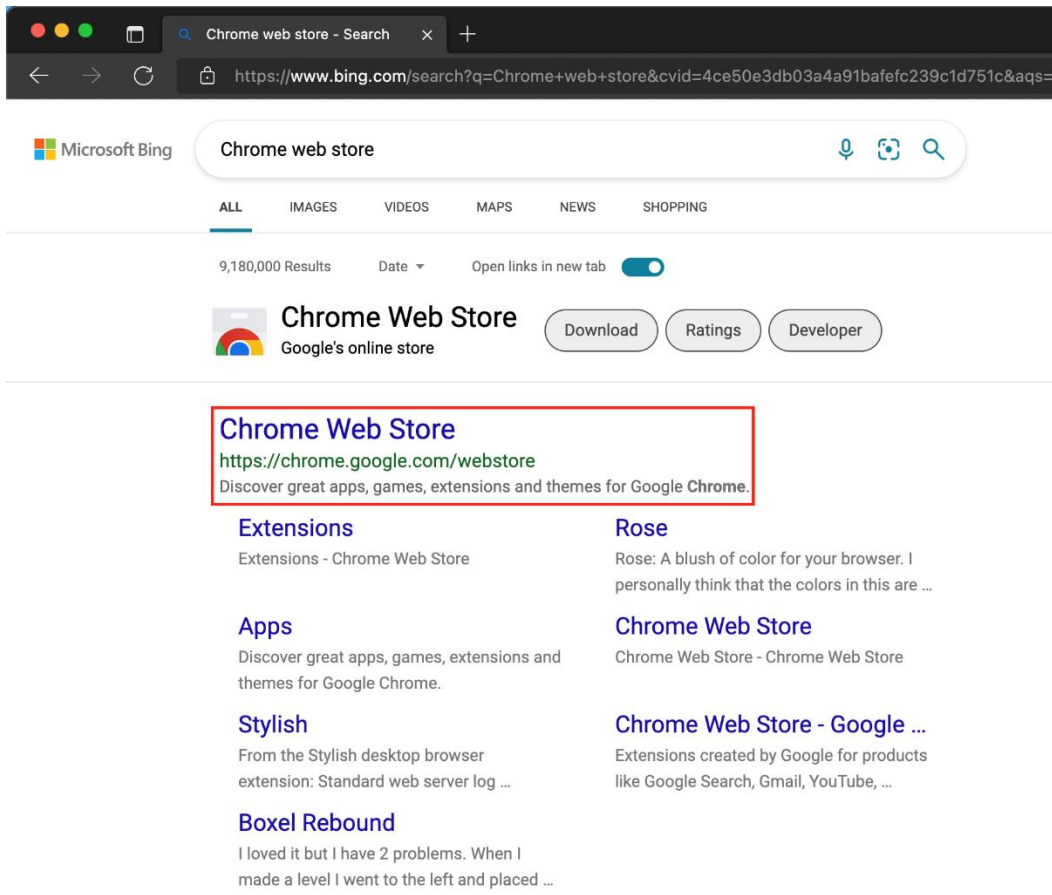
14. Then click on “Allow extension from other store”.



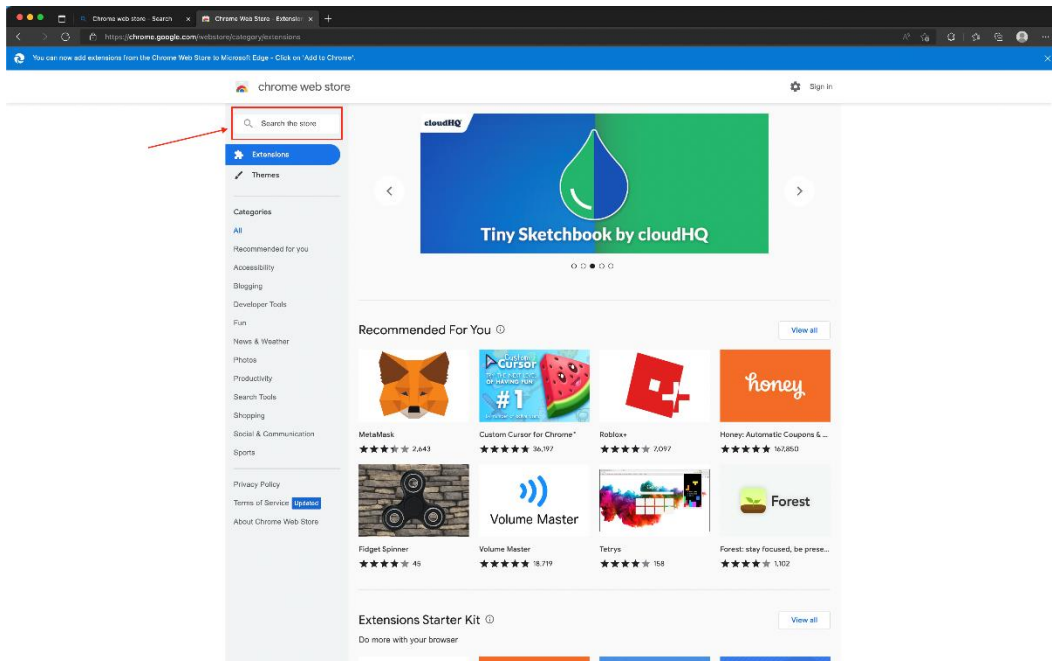
15. Then click “Allow”.



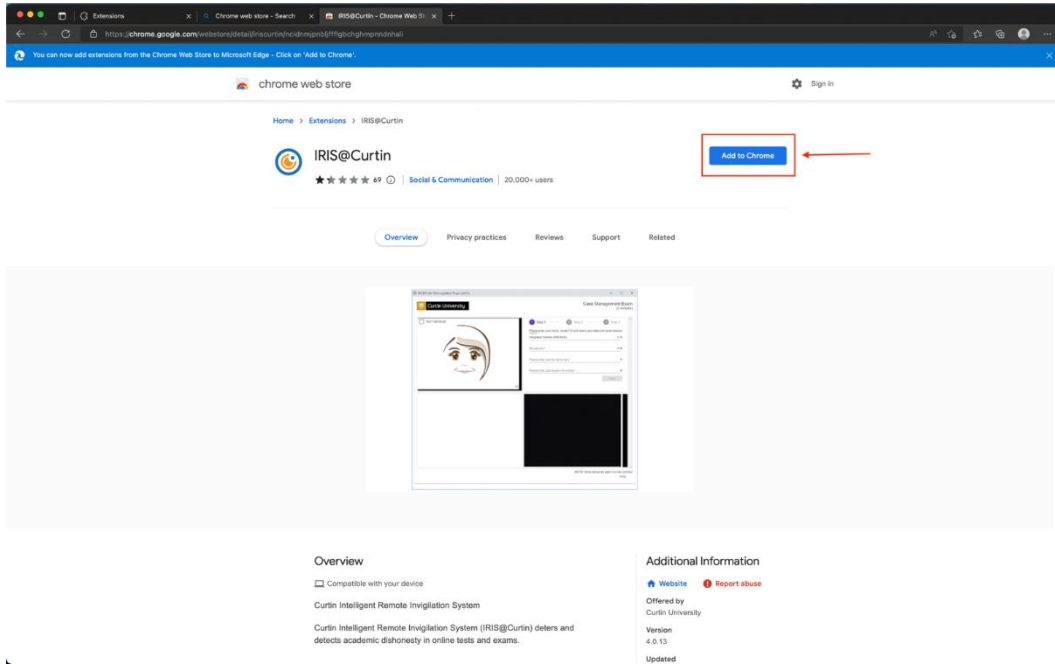
16. Using Microsoft Edge, google search “Chrome Web Store” and click on this option.



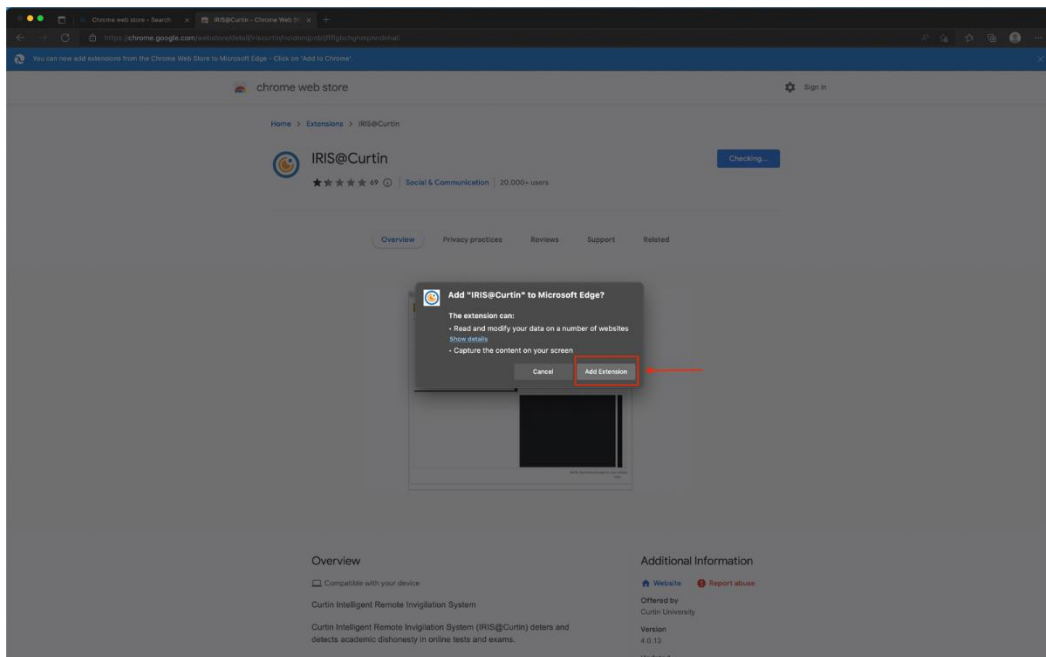
17. Then search “IRIS Curtin” using the search function on the left-side of the page.



18. Then find the “IRIS@Curtin” extension page and open it. Then click “Add to Chrome”.

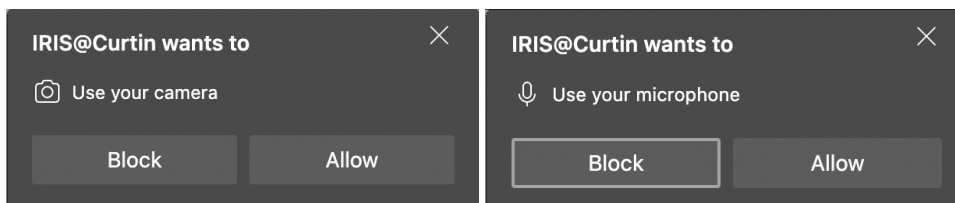


19. Then click on “Add Extension”.



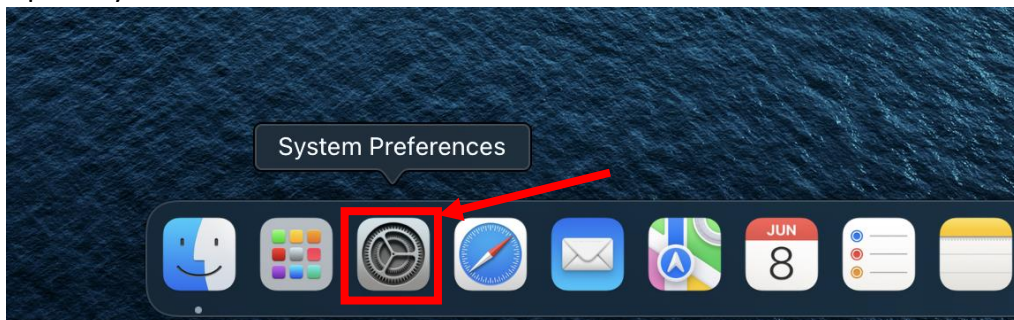
Camera and Microphone Issues

When the IRIS Extension is activated for the first time, ensure that you click on allow for both the “Camera” and “Microphone” permissions when prompted. Otherwise, IRIS will not work.

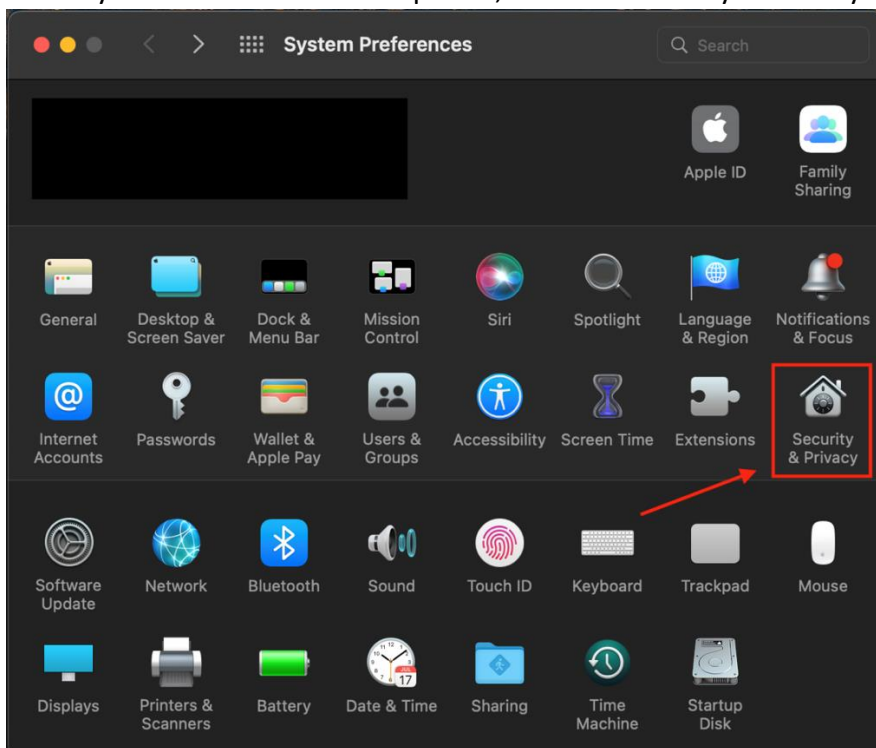


If you are having issues with your Webcam or Microphone, you need to check if you have given access to Microsoft Edge for the Camera and Microphone. To do this, please follow the instructions below:

1. Open “System Preferences” from the Mac dock.



2. Once System Preferences has opened, click on “Security & Privacy”.



3. Once in Security & Privacy, scroll down on the left-hand side, until you find “**Camera**” and click on this setting.
 - i. Then click on the gold lock on the bottom left of the window and input your password when prompted.
 - ii. Make sure that Microsoft Edge has been ‘Ticked’
 - iii. Repeat this for “**Microphone**”

